

# ALMUHANDIS TRANSPORT & GENERAL CONTRACTING - SOLE PROPRIETORSHIP L.L.C



**ALMUHANDIS**  
TRANSPORTATION & GEN.CONT.L.L.C

SUSTAINABLE SOLUTION FOR ALL SORT OF  
MARINE TRANSPORTATION AND SERVICES

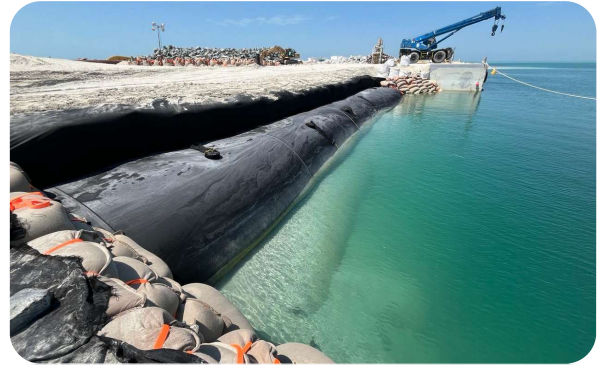


## WE ARE SPECIALIZED IN:

- Construction of Coastal Marine Structures
- Diving and Underwater Civil Works
- Sand Dredging and De-siltation
- Marine Piling and Construction of Sheet Pile Walls & Cofferdams
- Beach Construction and Coastal Protection Works
- Vessel Chartering and Management
- Survey and Soil Investigation Works

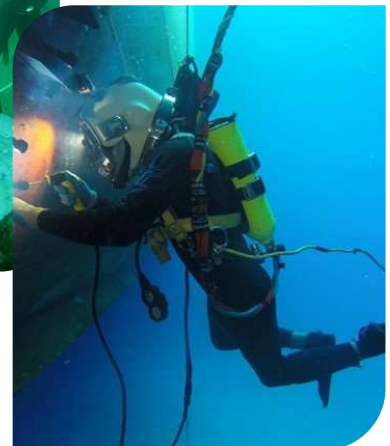
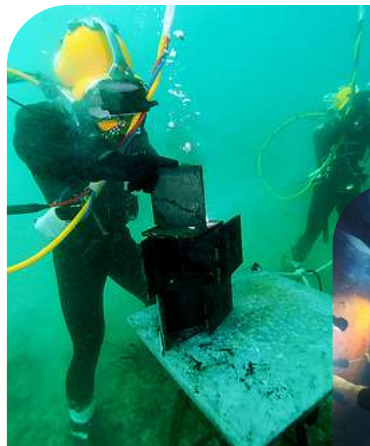
## CONSTRUCTION OF COASTAL MARINE STRUCTURES

The construction of coastal marine structures, such as seawalls, jetties, breakwaters, groynes, and artificial islands, requires meticulous planning, cutting-edge technology, and skilled execution. Al Muhandis excels in addressing these demands by combining state-of-the-art equipment, a highly experienced workforce, and a commitment to environmental stewardship. Our range of services encompasses all phases of project execution, including detailed design, dredging, reclamation, coastal protection, and installation of marine geo-synthetic solutions. Whether it involves stabilizing shorelines, protecting against erosion, or creating new landforms.



## DIVING AND UNDERWATER CIVIL WORKS

We have divers qualified in both underwater construction and underwater demolition. A variety of tasks such as damage repairs, structural inspections and assessments, demolition of waterline facilities or submerged obstructions, installation of submerged systems, or harbor and channel clearance. Extending construction, whether vertical or horizontal, beyond the shoreline and waterline is our specialty





## SAND DREDGING AND DESILTATION

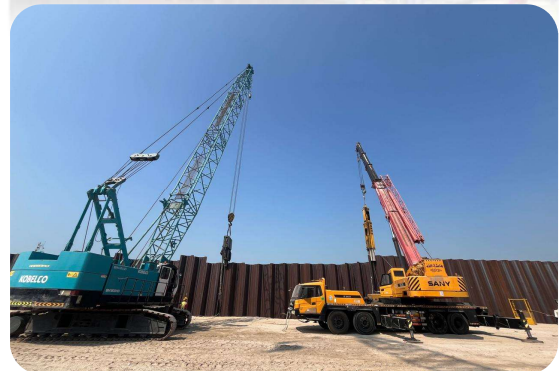
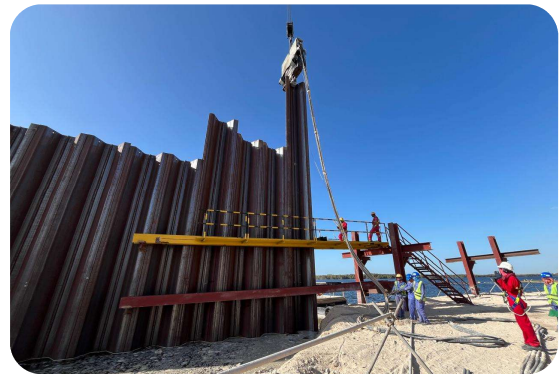
As pioneers in the field, we bring a wealth of experience and expertise, backed by state-of-the-art equipment and advanced dredging pumps designed to handle complex marine projects with precision and efficiency.

Al Muhandis prides itself on its efficiency and reliability, making us the preferred partner for clients seeking top-tier dredging services for ports, artificial islands, beach construction, and coastal protection projects. Our commitment to excellence ensures that every project we undertake is completed to the highest standards, contributing to the development and sustainability of marine infrastructure in the region.



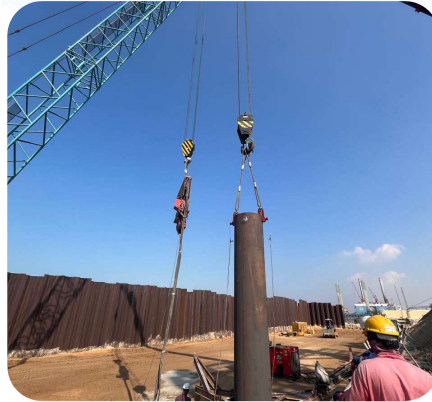
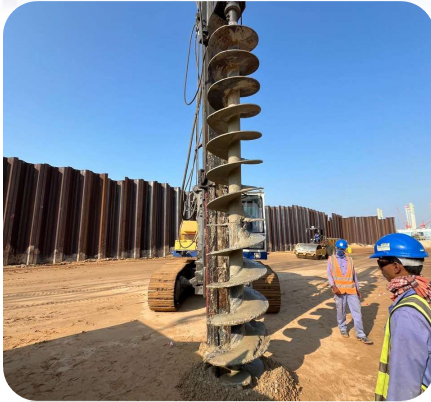
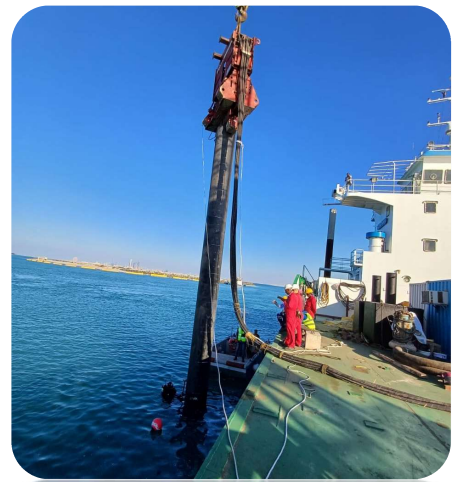
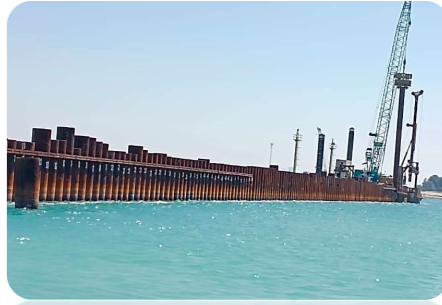
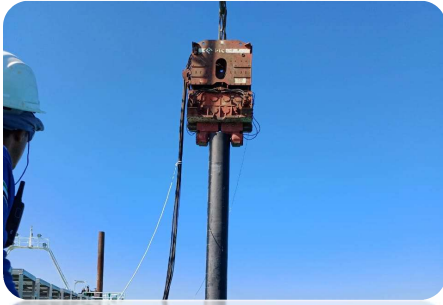
## MARINE PILING AND CONSTRUCTION OF SHEET PILE WALLS & COFFERDAMS

We are a pioneering force in marine pile installation, specializing in jetty construction with advanced methodologies and technology. Leveraging cutting-edge equipment such as vibro hammers and impact hammers, our experienced team delivers precision and efficiency in every project.



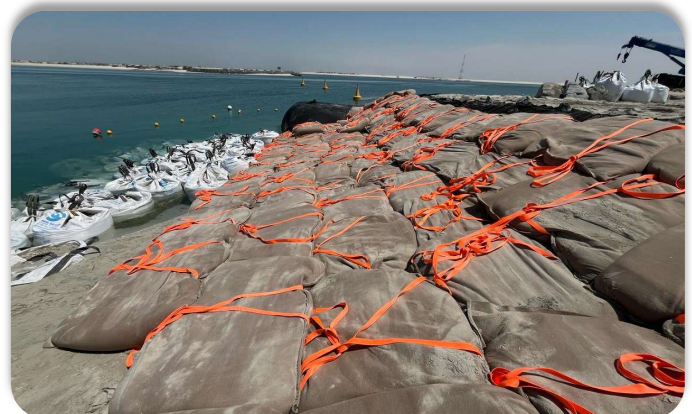
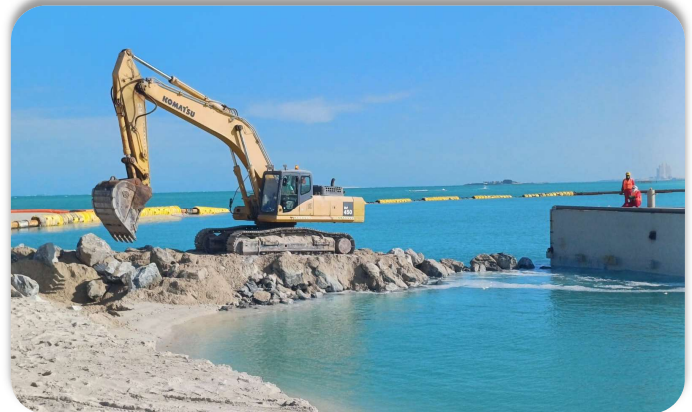


We specialize in the installation of tubular piles using advanced piling equipment, including the Müller MS 100HHF vibro hammer and ABI piling rig.



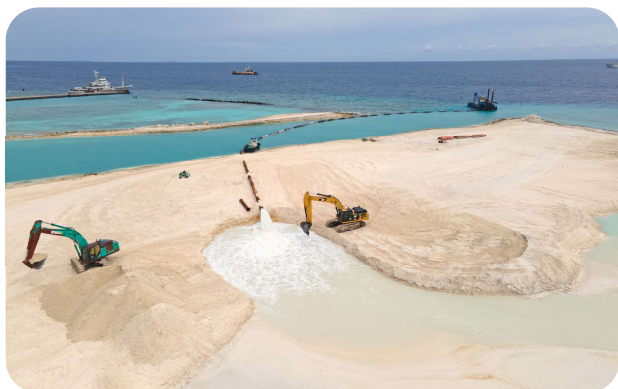
## BEACH CONSTRUCTION AND COASTAL PROTECTION WORKS

- Includes protection of Breakwaters and Groins in rock construction or including geo-synthetic tubes and bags
- Aimed at protecting the coast against coastline retreat, thus protecting settlements, infrastructure, the coast and the hinterland from erosion often at the expense of losing the beach and the dynamic coastal landscape.





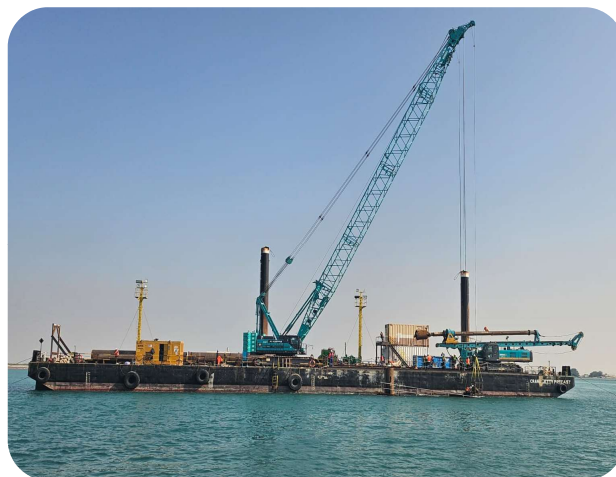
Geosynthetic materials from the designing stage to full operations are carried out by Muhandis for various applications related to environmental, earthworks and foundation engineering, hydraulic engineering and other construction areas such as beach development, island development etc.



## MARINE EQUIPMENT AND VESSEL CHARTERING

Al Muhandis Transport and General Contracting offers comprehensive marine equipment and vessel chartering services, providing clients with specialized marine assets to support a wide range of marine construction, dredging, and offshore operations.

We ensure that all our vessels and equipment are well-maintained, fully certified, and operated by experienced crews, guaranteeing safe and efficient operations for your marine projects. Our chartering services are designed to be flexible and tailored to meet the specific requirements of each client, whether for short-term projects or long-term engagements.



**CRANE JETTY PRECAST - BARGE**



**AST 03 – PUSH BARGE**



**AST 08 – PUSH BARGE**



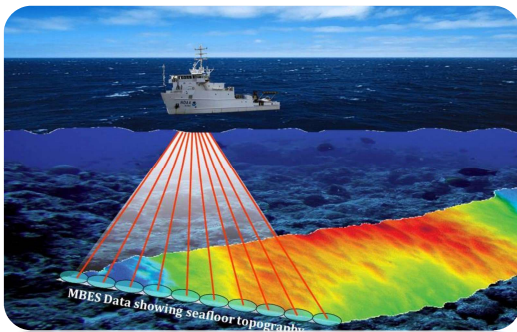
## SURVEY AND SOIL INVESTIGATION WORKS

Our survey works include topographic and bathymetric surveys, providing accurate mapping of land and underwater terrain to support project development. Leveraging advanced technologies such as GPS, LiDAR, and multibeam echo sounders, we deliver high-resolution data to guide construction and mitigate potential risks.

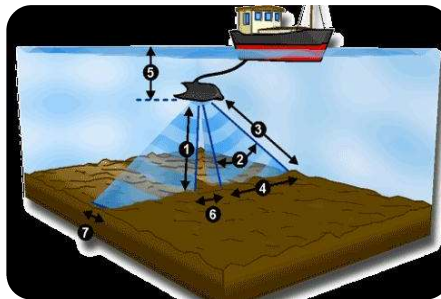
We specialize in geotechnical investigations at sea, utilizing our advanced modular pontoon, jack-up barge, and survey vessel to deliver precise and reliable results.



**SINGLE BEAM ECHOSOUNDER**



**MULTIBEAM ECHOSOUNDER**



**SIDE SCAN SONAR**



**GEOTECHNICAL INVESTIGATION USING MODULAR PONTOON AND SPECIALIZED MARINE EQUIPMENT**



# BOATS, BARGES AND OTHER FLEETS

SN	Description	Type
1	CRANE JETTY PRECAST	64M FLAT DECK BARGE
2	AST 03 – MOTOR BARGE	Multi Purpose Specialized Push Barge
3	AST 08 – MOTOR BARGE	Multi Purpose Specialized Push Barge
4	AST 25 – MOTOR BARGE	Multi Purpose Specialized Push Barge
5	Moeen – Ex Black Sea	Multi Purpose Specialized Barge with movable spud and ramp facility
6	Al Oun - Ex Yellow Sea	Modular Barge 14.5m x 7.6m x 1.2m, Self Propelled Azimuth 150HP with Power Pack and 4Ton Crane with Power Pack and anchor winch
7	Ezz Multi Purpose Work Boat - Ex Mertah with Trailer	40 foot Fiber Glass boat with Toilet \Yamaha 2*250 HP
8	Majd Work Boat - Ex Sea Master	40 foot Fiber Glass boat with Toilet \Yamaha 2*250 HP
9	Saari - Passenger Sea Bus	40 Ft Fiber Glass boat closed cabin with 30 seats and toilet / Honda 2 x 225HP
10	Marmal - Modular Pontoon with A Frame	Modular Pontoon 3No. 3 x 9 x 2m each with 10m A Frame and winch Capacity 5 Ton and 3 Point Mooring system with 100kg anchors
11	Barbarosa Tug Boat - Ex KEG	12m steel hull tug boat, 1 CAT 3406 - 450HP, Generator and Jib crane 800kg electrical
12	United 1 - Ex Zodiac 1	5m long with Yamaha 40 HP
13	Libra – Ex Zodiac 2	6m long with Yamaha 40 HP
14	Survey Boat - 13 Ft Multi Purpose Work Boat with Trailer	13 feet with Yamaha 15 HP
15	HDPE Pontoon 1 with A Frame	5m length x 5m width HDPE Pontoon with Steel Platform and Moonhole including A Frame and Electric Winch and trolley 3Ton Capacity
16	HDPE Pontoon 2	5m length x 5m width HDPE Pontoon with Steel Platform and Moonhole including A Frame and Electric Winch and trolley 3Ton Capacity
17	GEM	Aluminium Catamaran Boat 12m x 4.2m equipped with 2 x Yanmar 250HP and 2Cylinder Generator Engine
18	Amphibian WAKER	Steel Hull Articulated Amphibian Vessel with 300HP Power Pack running 2No. 360 Azimuth thrusters and 4 x 4 wheels - 10m x 3.5m
19	Flat Top Barge - Multi Porpose	19m x 6m x 2m flat top Barge (multi purpose coast guard barge)
20	Massah	Specialized Survey Boat
21	Sama	Aluminium work boat

**BOATS, BARGES AND OTHER FLEETS**



**MAJD – SERVICE BOAT**



**BARBAROSA – TUG BOAT**



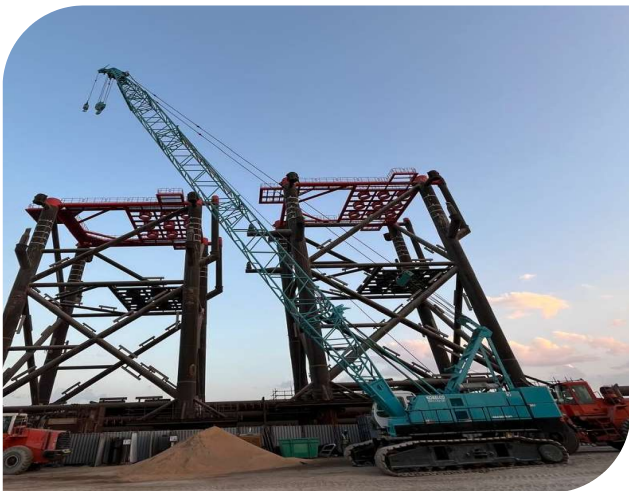
**AL OUN – MULTI CAT VESSEL**



**MESBAR – JACK UP BARGE**

**HEAVY EQUIPMENT**

SN	Description
1	Kobelco BM900HD – 90 Ton Crawler Crane
2	ABI Piling Rig
3	HITACHI KH100D – Hydraulic Crawler Dragline with Clamshell/Leader



**KOBELCO BM900HD – CRAWLER CRANE**



**ABI PILING RIG**





**HITACHI – KH100D HYDRAULIC CRAWLER DRAGLINE**



## **DREDGING EQUIPMENTS AND DELIVERY LINES**

SN	Description
1	TOYO DP 30B ELECTRICAL DREDGE PUMP (SUBMERSIBLE PUMP)
2	DRAGFLOW EL 35 – ELECTRIC PUMP (SUBMERSIBLE PUMP)
3	TOYO DP 50B Electrical Dredge Pump with 50HP 8inch Discharge (Submersible Pump)
4	SUMPTECH SH10-150 with 10inch Discharge Diameter and 150HP Power Hydraulically Operated (Submersible Pump)
5	Toyo DP 100BL Electrical Dredge Pump with 100HP 10inch Discharge (Submersible Pump)
6	TOYO DPH300B (Submersible pump - Equipped With 2 Side Cutters Hydraulically driven 22KW each)
7	DRAGFLOW HY400B - Hydraulic Pump with Jetting Ring and 600HP Caterpillar Power Pack (Submersible pump - Equipped With 2 Side Cutters Hydraulically driven 22KW each)
8	DAMEN DOP 3035LD Pump (Equipped with Hydraulically operated Jetting Pump and nozzle ring)
9	ZIDONG 14/12 - ZG Gravel Pump (Booster Dry Pump)
10	METSO - MM 400 14/16 inch Orion Series Slurry Pump (Booster pump - Dry Pump)
11	Jetting Pump 6 Inch
12	Booster Dredger Pump 12/14 with CAT D379 – 700HP
13	Woma Hydroblasting Pump Blue
14	Hydroblasting Pump Yellow
15	Delivery Line – 12 Inch Rubber Pipes Floating
16	Delivery Lines – 12 Inch HDPE
17	Delivery Lines – 12 Inch Rubber Pipes Non Floating
18	Floaters for delivery pipes 14inch including accessories bolts, nuts and rings



# EARTH MOVING EQUIPMENTS

SN	Description	Type
1	Shovel Loader VOLVO L180 E	29 Ton capacity wheel loader with 300HP enginer
2	KOMATSU PC 450	Normal Boom Excavator
3	POWER SCREEN	Specialized equipment for screening sand
4	TELE BOOM HANDLER	
5	TRACTOR	
6	CATERPILLAR 365	67 Ton capacity excavator with 22m long boom.



**KOMATSU PC 450 EXCAVATOR**



**CATERPILLAR 365 EXCAVATOR**



**TELE BOOM HANDLER**



**TRACTOR**



**WHEEL LOADER VOLVO L180 E**

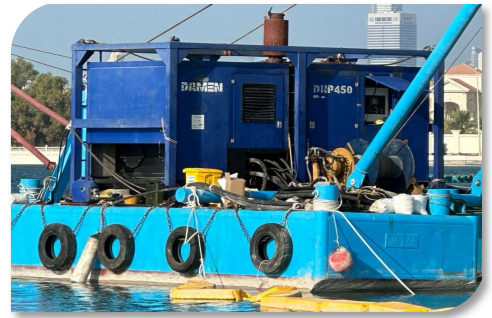


**POWER SCREEN**



## POWER PACK AND GENERATORS

SN	Description
1	DAMEN DHP 450 – CAT C13 – 700HP
2	Power Pack DOOSAN 12 Cylinder – 650HP
3	Power Pack CAT 3408 – 500HP
4	Ford 2715 6 Cylinder Engine Power Pack 120-200HP
5	Mitsubishi 4 Cylinder Power Pack
6	Nissan Power Pack
7	Promar Electric Power Pack 75HP
8	33 KVA Generator Diesel
9	13 KVA Generator Yanmar Diesel
10	4 Lamp Tower Light with Diesel Engine 7 KVA Generator
11	John Deer Generator 1



## IMPACT HAMMERS AND POWER PACKS

SN	Description
1	Vibro Hammer Muller MS -100 HHF
2	Vibro Hammer ICE - 1412
3	Vibro Driver PTC 30H1A with Power Pack PTC 350D.
4	Hydraulic Impact Hammer DKH – 5
5	Power Pack MULLER MS – A560
6	Delmag D46 Diesel Hammer



**MULLER MS 100 HHF**



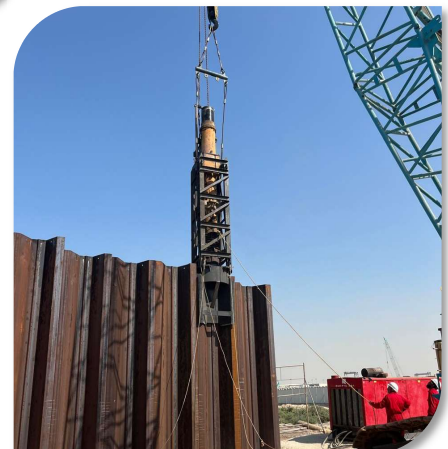
**POWER PACK MS-A560**



**PTC 30H1A**



**POWER PACK PTC 350D**



**D46 – DIESEL HAMMER**

## DIVING EQUIPMENT

SN	Description
1	Bauer Mariner D-LI Compressor - 1 No.s
2	Chamber Air Bank - 1 No.s
3	Diver Air Bank - 1 No.s
4	Dmack Kit 1St Aid - 1 No.s
5	Pnemo Grinder Back - 2 No.s
6	Air Test Kit - 1 No.s
7	Cp Reader - 1 No.s
8	Under Water Camera - 1 No.s
9	Video Portable System - 1 No.s
10	Video Cable 100M - 1 No.s
11	Bauer Air Fillters - 9 No.s
12	Stanly Jackhammer - 2 No.s
13	Stanly Hammer Drill - 1 No.s
14	Diving Cylinder 12 Litres - 24 No.s
15	SRP Unit - 10 No.s
16	CCTV Screen without Camera - 2 No.s
17	Diving Air Compressor - 5 No.s
18	Stanley Hydraulic Underwater Jack Hammer
19	Stanly Grind - 1 No.s
20	Air Jack Hammer - 1 No.s
21	Diving Umbilicals - 9 No.s
22	S.R.P Diving System Dive Panel Cctv - 1 No.s
23	Diver Depth Gauges Middle - 2 No.s
24	Regulator For Dive Panel Parts And Spares Box - 1 No.s
25	Full Face Dive Masks - 4 No.s
26	Bauer Compressor Parts Box - 1 No.s
27	Dive Panel With Two Diver Cctv - 1 No.s
28	Pvho Dive Chamber - 1 No.s
29	O2 Portable Analyzer - 1 No.s
30	Kirby Morgan37 - 2 No.s
31	Kirby Morgan 18 - 1 No.s
32	Kirby Morgan 28 - 1 No.s





# SURVEY EQUIPMENTS

SN	Description
1	TRIMBLE TDL450H
2	Trimble – 855 Receiver Unit
3	AC to DC Convertor
4	RS 232 and LAN Connector
5	Trimble V359 Receiver Unit
6	Trimble R8S GNSS Receiver
7	Odom Hydrotrack MK II Single Beam Echo Sounder
8	Hydrotrack Echo Sounder Top Side Unit
9	Transducer
10	LEICA CS 15 Controller
11	GNSS Receiver LEICA GS14
12	GNSS Antenna LEICA ICON GPS 60
13	LEICA GETAC Controller
14	TSC3 Controller
15	12 V Battery Charger
16	Hydro Multisense
17	MGB – Tech
18	Hemisphere V113 DGPS Positioning System with Cable
19	Teledyne Echotrac E20 Single Beam System with Cable
20	Norbit Multi Beam System with Accessories
21	Geo Acoustics Sub Bottom Profiler Transducer + Coda Da4g With Accessories
22	Innomer Sub Bottom Profiler Ses2000 + Transducer And Cable
23	Edge Tech Side Scan Sonar System With Tow Fish And Cables
24	Seaspy Marine Magnetometer System With Tow Fish, Transreceiver And Cable
25	Gps With All Accessories- Trimble R12
26	SOKKIA- IM- 52 Total Station With All Accessories
27	Radio Detection Precision Cable , Pipe And Rf Marker Locator Receiver
28	Sokkia B40A – Automatic Level
29	LEICA – TC -1202+ - Total Station
30	LEICA – TC -1202+ - Electronic Digital Level
31	LEICA DNA03
32	Geode-24-channel-seismic With Geophone Cable And 4_5hz Geophones And Seismograph Device





### **Mission**

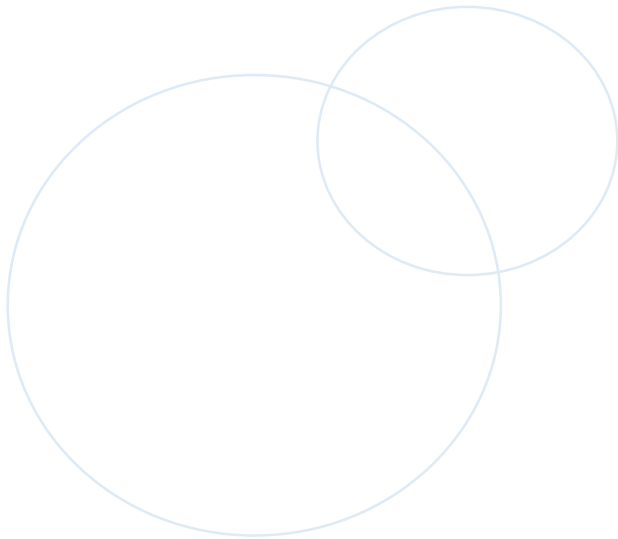
**AlMuhandis Transport & General Contracting  
Sole Proprietorship LLC**

Provide comprehensive Marine and logistical support and backup to our clients in a single marine services solution.



### **Vision**

- Aiming to establish ourselves as one of the most reliable marine services companies we are committed to quality reliable services through a strategy that puts client's needs in the first place while complying with HSE requirement and achieving company's shareholders goals.
- Offering cost effective solutions.
- Operating up to date technology.





## PROJECT REFERENCES

SL NO	PROJECT DESCRIPTION	CLIENT	YEAR	VALUE IN AED
01	Construction of Private Small Boat Marina	Shield Contracting Abu Dhabi	2001	1,400,000
02	Refurbishment of Quay Wall Jebel Ali Port	Jebel Ali Port Authorities	2001	2,220,000
03	Kalba Lagoon Dredging Works & Edge Wall Phase I (Sheet Pile Works)	Gouvernement Of Sharjah - Public Works Department	2005	7,361,643
04	Rock Placing, Diving Services & Vessels Charter Abu Dhabi Corniche Development	BM Engineering Abu Dhabi	2002-2003	11,500,000
05	Beach Nourishment in Al Khan Lagoon Phase 1	Darwish Engineering	2004	5,800,000
06	Beach Nourishment in Al Khan Lagoon Phase 2	Darwish Engineering	2005	12,200,000
07	Rock Revetment in Al Khan Lagoon	Darwish Engineering	2005	5,400,000
08	Ras Al Khaimah Port Development Phase 1a (Sheet Pile Works)	Government Of Ras Al Khaimah - Department Of Ports & Customs	2005	18,014,694
09	Rock Groin in Al Khan Lagoon	Darwish Engineering	2006	10,000,000
10	Logistics and Marine Transportation – Sheik Mohammed Private Island	Dutco Balfour Beatty Group	2005	14,500,000
11	Logistics and Marine Transportation – Dhabbiya	CCC Wade Adams Al Husam Contracting	2005-2006	6,400,000
12	Logistics and Marine Transportation in Al Yasat Ali Island	Al Ahmadiyah Contracting	2006	3,500,000
13	Logistics and Marine Transportation and Precast Concrete Placing Sharjah – Khalid Lagoon	China Harbour Engineering	2005-2006	12,000,000
14	Logistics and Marine Transportation – Sharjah Layyah Wharf	China Harbour Engineering	2006-2007	9,500,000
15	Logistics and Marine Transportation – Sharjah New Market Wharf	China Harbour Engineering	2006-2007	8,500,000
16	Logistics and Marine Transportation – SAQR Port New Berths 9-11	China Harbour Engineering	2006-2007	12,000,000
17	Placing Acropods and Rock for China Harbour – Sharjah – Hamriya Power Station.	China Harbour Engineering	2006-2007	7,350,000

## PROJECT REFERENCES

SL NO	PROJECT DESCRIPTION	CLIENT	YEAR	VALUE IN AED
18	Sand Dredging in Qaffay Island 2006	Dutco Balfour Beatty Group	2006	950,000
19	Sand Dredging in Jabal Ali Power Station Intake	Target Marine	2006	650,000
20	Sand Dredging in DIMC – Jabal Ali Area 2006	Dutco Balfour Beatty Group	2006	1,250,000
21	Fabrication and Installation of Boat Lift at DIMC 2006	Dutco Balfour Beatty Group	2006	4,300,000
22	Ras Al Khaimah Port Development Phase 2a (Sheet Pile Works)	Gouvernement Of Ras Al Khaimah - Department Of Customs & Ports	2006 – 2008	20,710,938
23	Al Jeer Fishing Harbour - Sheet Pile Quay Wall Works (Sheet Pile Works)	Gouvernement Of Ras Al Khaimah - Department Of Customs & Ports	2006-2008	17,814,531
24	Sand Dredging for Sea Water Intake Pipe – Fujairah	Tidal Marine Contracting	2007	4,100,000
25	Diving Services – Marine Sampling and Placing Geotextile and Rock	Odebrecht – UAE	2007	5,000,000
26	Supply and Installation of Silt Curtain – Dubai Creek	Dutco Balfour Beatty Group	2007	1,750,000
27	Supply and Installation of Silt Curtain – Dubai Creek	Dutco Balfour Beatty Group	2007	1,800,000
28	Sand Dredging in Dubai Festival City Site	Dutco Balfour Beatty Group	2007	660,000
29	Supply and Installation of Silt Curtain – Dubai Creek	Dutco Balfour Beatty Group	2008	850,000
30	Dredging and Dewatering Works in Dubai Creek	Dutco Balfour Beatty Group	2008	4,155,000
31	Sand Dredging in Dubai Festival City Site	Dutco Balfour Beatty Group	2008	270,000
32	Trenching and pipe line laying at Yas Island	Scene Construction	2008	13,180,000
33	Sand Dredging in Abudhabi Yas Island	Scene Constructions	2008	640,000
34	Geo-Textile Supply	National Marine Dredging Co.	2008	300,000
35	Supply of Silt Curtain Locally Assembled by United	National Marine Dredging Co.	2008	700,000
36	Maritime Works - New Jetty Phase 1a Extension At Port Of Ras Al Khaimah (Sheet Pile Works)	Gouvernement Of Ras Al Khaimah - Department Of Customs & Ports	2008-2009	14,011,429



## PROJECT REFERENCES

SL NO	PROJECT DESCRIPTION	CLIENT	YEAR	VALUE IN AED
37	Supply of Silt Curtain Locally Assembled by United	National Marine Dredging Co.	2009	300,000
38	Supply of Silt Curtain Locally Assembled by United	China Harbour Engineering Co.	2009	400,000
39	Sand Dredging in Dubai Marina	Dutco Balfour Beatty Group	2009	1,140,000
40	Supply of Silt Curtain Locally Assembled by United	National Marine Dredging Co.	2009	5,500,000
41	Fujairah Northern Land Reclamation Project - Coastal Protection Works (Sheet Pile Works)	Government Of Fujairah, Fujairah Municipality	2009 – 2011	186,715,052
42	Stormwater wet well cleaning for 62 locations all over Abu Dhabi.	Malegori Landscape General Contracting L.L.C	2010	12,450,000
43	Dredging, Trenching in seabed and Pipe line laying at Abu Dhabi between intercontinental area	NPCC	2010	16,880,000
44	Water Treatment Station, Screen Cleaning, and Pipeline Laying at AL Yasat Island.	Private Residential Office	2011	11,890,000
45	Al Sadr Port Extension - Construction Of Pavement Naval For Camp No. 140701 (Sheet Pile Works)	G.H.Q. Armed Forces, Command Of Military Works, Al Nahyan Camp, P.O.Box 309/1000	2011 – 2012	127,904,327
46	Port Of Fujairah - Oil Terminal 2 Phase 2 (Package 01 & 02) (Sheet Pile Works)	Port of Fujairah	2012-2014	205,087,080
47	Channel Cleaning for new bridge at Al Reem Island.	Mubadala Development Company	2015	9,830,000
48	Trenching in seabed & Pipe line laying at ICAD – 500m	Al Masaood	2015	7,470,000
49	Design, Supply and Installation of SoilTain Geo-Systems for the construction of Submerged Sill consist of 15 SoilTain Tubes of 35m lengths and design height of around 1.5m each for private beach project at Mina Palace Project	Sheik Mohammed Bin Zayed Palace	2016	12,938,000
50	Construction Of Permanent Quay Wall At Camp 711001 (Sheet Pile Works)	UAE ARMED FORCES COMMAND OF MILITARY WORKS, Fujairah	2016-2018	44,000,000

## PROJECT REFERENCES

SL NO	PROJECT DESCRIPTION	CLIENT	YEAR	VALUE IN AED
51	Design and Construction of Sea Defense System and Private Beach including survey, design and construction of 110m submerged breakwater made of sand filled soiltain geotextile tube for private beach at Fairmont Fujairah	HH Shaikh Sultan Bin Khalifa Al Nahyan Private Office	2017	10,420,000
52	Yas Acres Development – Lea Yas Island – B7c External Works – Infrastructure & Landscape Works (Sheet Pile Works)	Crystal Projects General Contracting LLC	2020	13,840,200
53	Design And Construction Of Concrete Ramp For Landing Craft (Ro-ro Ramp) (Sheet Pile Works)	Crystal Projects General Contracting LLC	2020	11,310,740
54	Beach Nourishment by the installation of Huesker SoilTain tubes under water at a depth of 1.50 to 2.00m (below mean sea level) at Al Bustan Palace “A Ritz Carlton Hotel” Beach Rehabilitation	Al Bustan Palace	2021	14,200,175
55	Design, Supply and Installation of the SoilTain Geosystem for the construction of sill for the new submerged breakwater with total length 205m.	Barrak Mohammad Al Barrak International Contracting	2022	604,990
56	Improvement and Protection Works of the Sand Bank Island and Private Beach at Sea Palace Abu Dhabi – UAE Property No. 1244106	Yosh Development LLC	2022	20,000,000
57	Sand dredging and sand pumping at Sea palace Abu Dhabi	Yosh Development LLC	2022	8,540,000
58	Construction Of Local Infrastructure Works For Package Iia-local Infrastructure Works For The Development Of Sector Rt4 (Reem Downtown) Of Reem Island Development, Al Reem Island, Abu Dhabi (Sheet Pile Works)	Crystal Projects General Contracting LLC	2023	21,860,500




59	Design, supply and Installation of Landing Craft Caisson Jetty and Temporary site facility to be used during the construction phase of Al Nawras Resort and Golf Club at Nawras Island opposite Bahrani Island adjacent to Abu Dhabi Island in the Emirate of Abu Dhabi project.	China State Construction Engineering Corporation (Middle East) (L.L.C.)	2023	
----	--	---	------	--

## ON GOING PROJECTS

SL NO	PROJECT DESCRIPTION	CLIENT	YEAR	VALUE IN AED
1	Extension of NMDC Energy Jetty at ICAD 4, Abu Dhabi – UAE	NMDC ENERGY	2024	
2	Marine Vessel Chartering – For Mid Island Parkway Phase 1B - Phase 1 (DMT-CR-032-2024)	Yas Projects / China Railway International Group Co. Ltd – JV	2025	
3	Dredging and material disposal at NMDC Energy Jetty ICAD 4	NMDC Energy	2025	
4	Dredging using the long boom excavator on pontoon up to -6 ACD at ICAD 4	Al Masaood	2025	



©ALMUHANDIS TRANSPORT & GENERAL CONTRACTING SOLE PROPRIETORSHIP LLC

 +971-506443755  
+971-529136018

 [i.massad@magmarine.me](mailto:i.massad@magmarine.me)

[akhil.krishnan@magmarine.me](mailto:akhil.krishnan@magmarine.me)



**ALMUHANDIS**  
TRANSPORTATION & GEN.CONT.L.L.C